
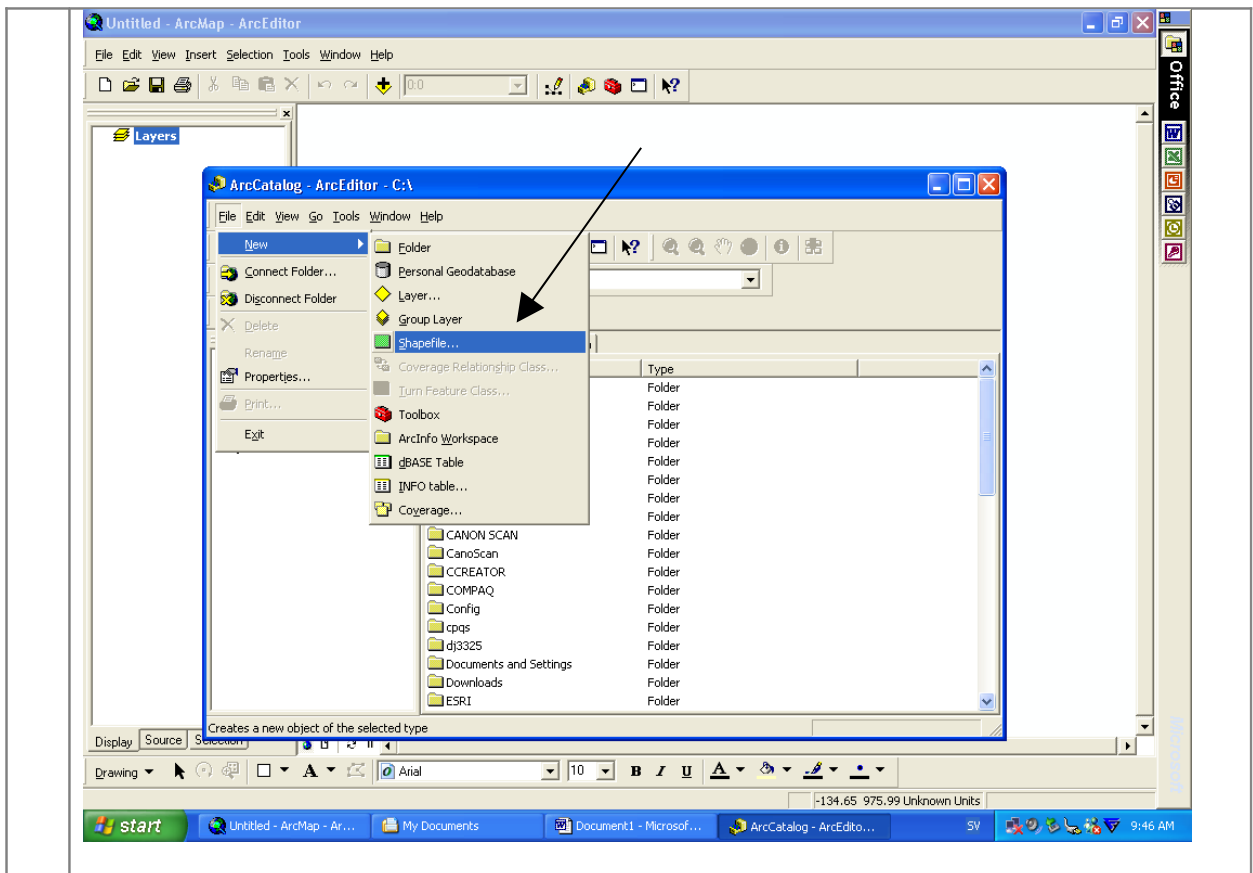




7.03.02 How to create shapefiles

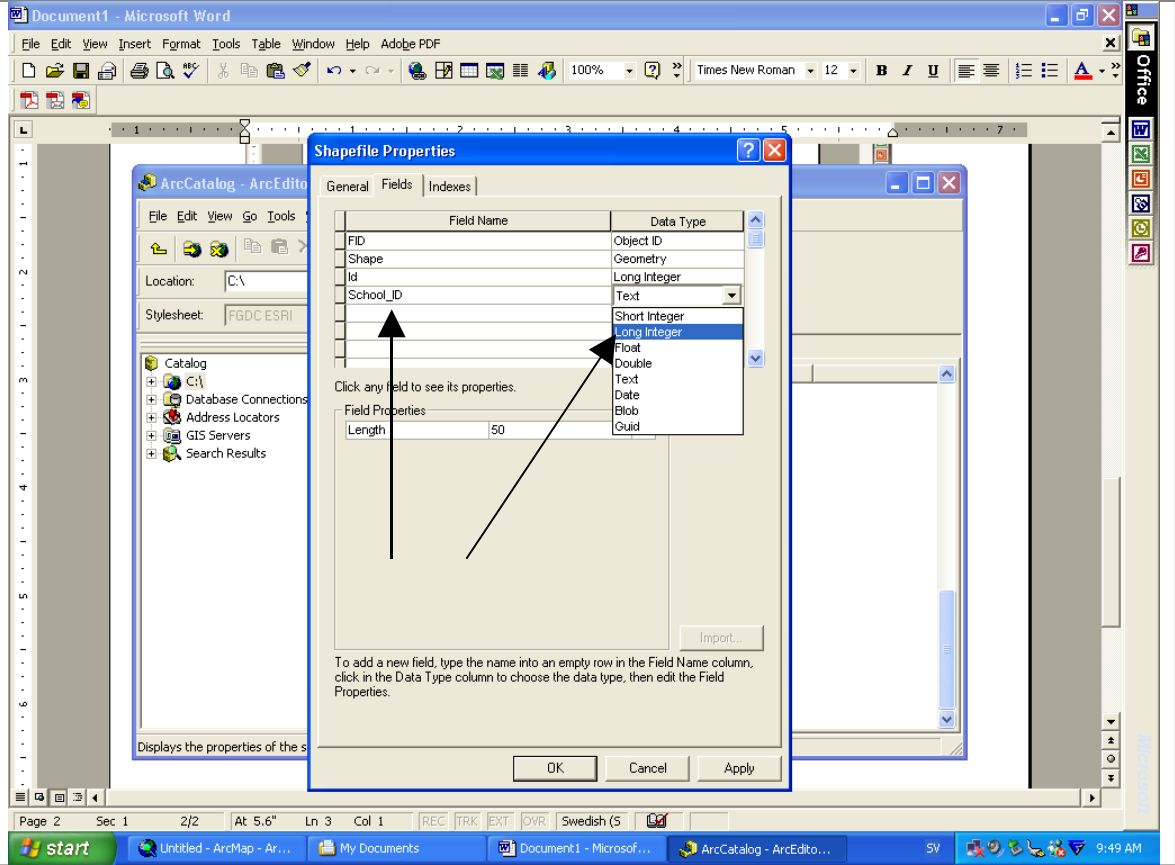
	<h3>Introduction</h3>
	<p><i>In this exercise we will create a new shapefile from scratch. This new shapefile will be joined with attribute data in tutorial 7.03.03</i></p>
	<h3>Getting started</h3>
1	<p>Start ArcMap. A window with three alternatives appears. (See image below.) Choose <i>A new empty map</i>. Click OK.</p>
2	<p>Start ArcCatalog by clicking on the <i>ArcCatalog</i> button  in the toolbar. The ArcCatalog window appears.</p>
3	<p>Navigate to the C:\HLURB\CLUP\01_CLUPGIS (Laurel)\01_SE folder in the catalog tree.</p>
	<h3>Creating New Shapefile</h3>
4	<p>From the ArcCatalog menu bar, select File > New > Shapefile... (see image below).</p>



- 5 The *Create New Shapefile* window appears (see image below). In the *Name* field type 'SE20_SchCap08'. Choose *Point* in the *Feature Type* dropdown list .
 - 6 Click **Edit** to define the shapefile's coordinate system. The *Properties for Spatial Reference* window opens.
 - 7 Click **Select**. The *Browse for Coordinate System* window appears. Navigate to the **Geographic Coordinate System/Asia/** folder. Select **Luzon 1911.prj**, click **Add**. Back in the *Properties for Spatial Reference* window, click **Apply**, then **OK**.
- When the *Properties for Spatial Reference* window first opened, three alternatives were given: *Select*; *Import*; *New*. A smooth way to set the coordinate systems is to use the *Import* alternative. You will browse to an already existing shape-file and copy its spatial properties to the new shapefile. In the best case scenario a CLUP dataset collection will only consist of dataset in the same coordinate system and the *Import* alternative will be very easy. In other cases you must of course be aware of and choose a shapefile with the correct spatial settings.
- 8 Click **OK**. The new shapefile is created.
- Adding Field to the Shapefile**
- 9 We will later join attribute data to this shapefile. In order to prepare for this we need to create an index column – or field - that corresponds to the template found in Chapter 5. Right-click on the shapefile in the catalog tree, then select **Properties**. The *Shapefile Properties* window appears.

1
0

Go to the **Fields** tab, see image below. Click on an empty row in the *Field Name* column and type 'SCH_ID' as the name of the new field. Select *Long Integer* from the *Data Type* drop list. In the *Length* field under *Field Properties* type 10. Now click **Apply** and then **OK**.



You are done with this exercise.