

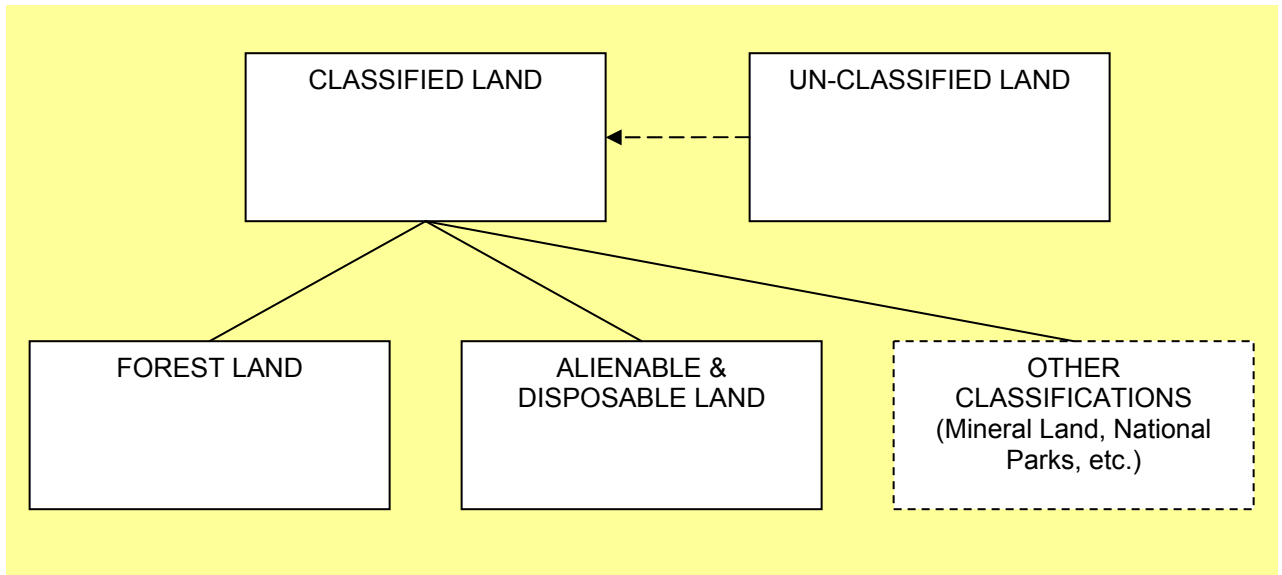


4.09.01 Land Management: Land Classification

Note: This is a first attempt to provide guidance in preparing the information product needed for the CLUP and is intended to be used hand-in-hand with Volumes 1 and 2. As more knowledge is gathered, the IP will be updated. Likewise, updates may be required due to new or changing land-use policies. Furthermore, data will continuously be prepared by the custodians, which may require updates.

For the latest update, please check HLURB Homepage: <http://www.hlurb.gov.ph/> or contact HLURB, telephone +632 927 2698.

LAND CLASSIFICATION



Step 1: Prepare the Background and Identify the Objective of the GIS Analysis

The Land Classification chart shows that under classified land are forest lands and alienable and disposable lands. The first step in the identifying land classification in the municipality/city is for the MPDC to verify with NAMRIA's Land Classification Division.

In order to visualize land use conflicts in a given municipality/city, this IP is included in the CLUP process to organize the data regarding classified areas in the respective municipality.



Step 2: Identify the Indicators to Evaluate Land Classification

Land Classification is found in maps, produced and provided by NAMRIA. If there are unclassified areas within the municipality, the planner should contact NAMRIA to get the status of these areas. In principle, only A & D Lands are suitable for future urban use.

Step 3: Create the Database

Attributes

There is one CLUP table that is needed for this dataset:

LM04 Land Classification.

The Land Classification Department at NAMRIA should be consulted regarding current information. The land classification maps are in analogue format, and there are no available digital datasets.

Another source of information concerning alienable and disposable lands is the Land Management Bureau (LMB).

Spatial

The feature types are here polygons.

The following symbology is used in this example.

Forest land

Alienable and disposable land.

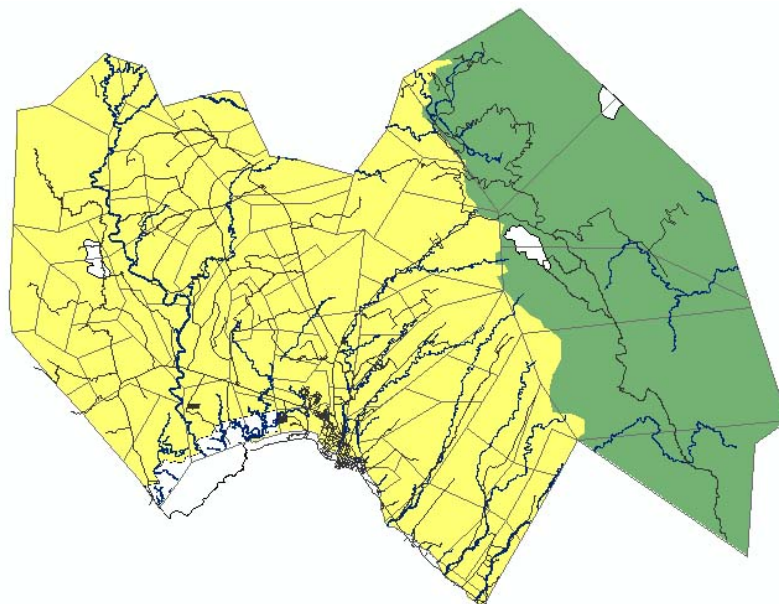
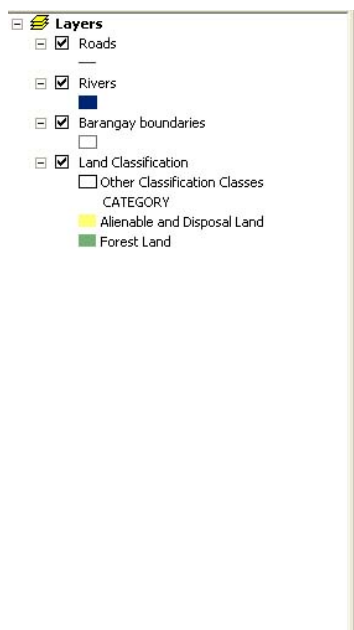
Land with other classification

Unclassified land:



(blank
)





Step 4: Analyze the data:

In planning for future urban development, the land classification layer should be used as one constraint for location of designated areas. Select the alienable and disposable areas and save these as a new layer. This layer will then be used within the risk and suitability analysis.

This new layer will be symbolized by a hatching pattern:





Step 5: Present the Data

The map below shows the areas that are unavailable for urban land use. Roads, rivers and barangay boundaries are added to the map for orientation purposes.

